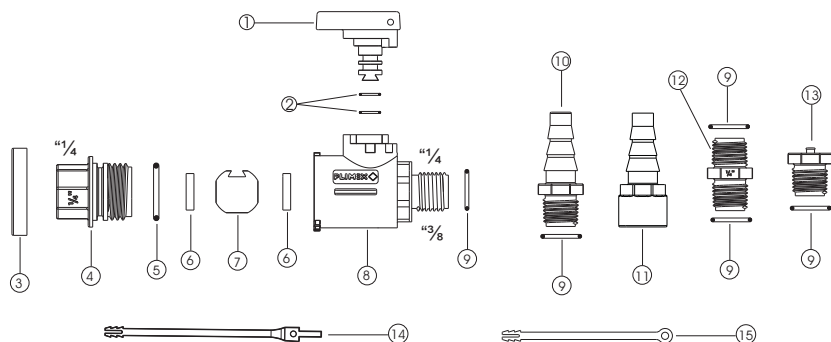


PVC-U MINI VALVE



N° REF.	COMPONENT	MATERIAL	QUANT.	N° REF.	COMPONENT	MATERIAL	QUANT.
1	lever	pvc-u	1	9	o'ring	epdm	1
2	o'ring	epdm	2	10	male hose nozzle	pvc-u	1
3	safety nut	pph 2150	1	11	female hose nozzle	pvc-u	1
4	thread cap	pvc-u	1	12	nipple	pvc-u	1
5	o'ring	epdm	2	13	plug	pvc-u	1
6	sphere backups	ptfe	2	14	safety tie	pph 2150	1
7	ball	pvc-u	1	15	plug tie	pph 2150	1
8	body	pvc-u	1				

STANDARDS

The mini valves strictly respect the standards EN10226-1 and ISO 7/1.

ASSEMBLY

By screwing according to ISO 7/1 recommendations.

SERVICE PRESSURE

The service pressure, just as an indication, is of 10 bar at 20°C (water)

ABBREVIATION INTERPRETATION

- d - Nominal diameter
- G - Nominal diameter of the screw
- Quant - Quantity of fittings that each box contains
- Gr - Approximate weight of fittings in grams
- A - Box 13.5 x 13.5 x 12
- B - Box 29 x 23 x 16.5